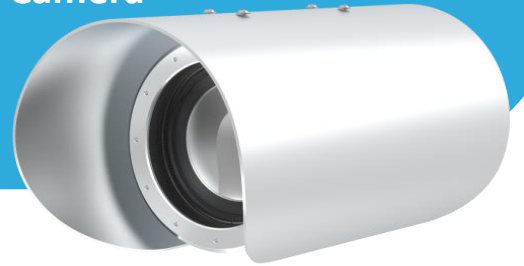




# SN-TPC6406PT-F

Rail monitoring Thermal Imaging Network Bullet Camera



## Key Features

- VOx uncooled focal plane detector with 640×512 resolution
- NETD ≤ 40mK
- 100mm fixed thermal lens
- Supports the detection of humans, vehicles, train tracks, and large animals
- Smart events: intrusion, single line crossing, double line crossing, loitering, wrong-way, people counting, enter area, leave area
- Temperature range: -20°C to 150°C (-4°F to 302°F)
- Supports 3D DNR and 17 adjustable pseudo-colors
- Provides network, alarm, and RS485 control interfaces, making it easy to integrate with third-party systems
- NDAA Compliance, IP66

## Specification

Thermal Module	
Image Sensor	Vanadium Oxide Uncooled Focal Plane Arrays
Resolution	Sensor is 640×512. Image can be scaled up to 1280×1024
Pixel Pitch	12 μm
NETD	≤ 40mK
Spectral Range	8 to 14 μm
Focus Control	Fixed lens, Focus-Free
Focal Length	100 mm
Aperture	F1.0
Field of View (FOV)	H: 4°, V: 3°
Intelligent Analytics	
Smart Detection	Supports the detection of humans, vehicles, train tracks, and large animals
Intelligent Analysis	Intrusion, Single line crossing, Double line crossing, Loitering, Wrong-way, Enter area, Leave area (these functions support accurate detection of human/vehicles), People counting
People counting	Support
Thermal Function	
Temperature Range	-20°C to 150°C (-4°F to 302°F)
Accuracy	±2°C / ±2%
Temperature Detection	3 temperature measurement rule types, 20 rules in total, 1 full screen, 19 others (spot, areas, line).
Temperature Alarm	Temperature difference alarm, Threshold alarm, Temperature rise alarm
Temperature Display	Display in the lower left corner; follow the cursor display of the highest temperature, lowest temperature or average temperature
Response Time	≤ 30ms
Video and Audio	
Main Stream	1280×1024, 1280×720, 640×512 @25fps
Sub Stream	D1, CIF @25fps
Bit Rate Control	CBR/VBR
Bit Rate	Main stream: 100 Kbps to 8 Mbps, Sub stream: 100 Kbps to 6 Mbps
Region of Interest	Off/On (8 Zone, Rectangle)
Audio Compression	G.711 A-law, G.711 μ-law, PCM
Audio Bit Rate	64 Kbps (G.711), 128 Kbps (PCM)
Image	
Image Setting	Brightness, Contrast, Sharpness
Mirror	Horizontal / Vertical / Horizontal + Vertical
Pseudo-color Setting	Up to 17 colors (White-hot / Black-hot / Rainbow / Iron red / HSV / Bone / Cool / Copper / Fire-hot / Pink / Spring / Summer / Autumn / Winter / Jet / Flame / Rose -Bengal)
FFC Control	Auto / Manual
Noise Reduction	2D/3D DNR
OSD	Up to 8 OSD
Privacy Masking	Up to 4 areas

Event	
Alarm Triggers	IVS, Temperature anomaly, Motion detection, Alarm Input, Disk alarm, Network alarm
Alarm Events	Alarm record, Alarm output, FTP upload, SMTP upload
Network	
Protocols	IPv4/IPv6, HTTP/HTTPS, DNS, DDNS, DHCP, PPPoE, RTSP/ RTCP/RTP, TCP/UDP, NTP, ARP, UPnP, FTP, SMTP, QoS, ICMP, IGMP, SMTP, 802.1x, SNMP, Multicast
Interoperability	ONVIF (Profile S/T/G/M), SDK, CGI
User/Host Level	Up to 10 users, 3 levels: Administrator, Operator, Media user
Security	IP address filter, encrypted HTTPS, Illegal login lock, IEEE 802.1x
Web Viewer	<IE11, Chrome, Firefox, Microsoft Edge
Interface	
Network Interface	1 Ethernet (10/100 Base-T) RJ-45 Connector
Alarm Interface	1ch Alarm In, 1ch Alarm Out
BNC Interface	1ch (CVBS output)
Control Interface	1ch RS-485
SD Card Slot	Built-in, up to 512GB
General	
Language	English, Chinese, Polish, Italian, Portuguese, Spanish, Russian, French, Czech, Hungarian. Default: English
Power Supply	12VDC
Power Consumption	Max 4W
Working Temperature/Humidity	-40°C to 60°C (-40°F to 140°F), Humidity: ≤90% RH (non-condensing)
Operating Humidity	0 to 90% RH
Certifications	CE/FCC
Ingress Protection	IP66
Material	Metal
Dimensions	Supports the detection of humans, vehicles, train tracks, and large animals
Net Weight	
Cable	8-core molded housing female pin connector, 8-pin molded housing soldered male pin connector
Ordering Information	
Model	Description
SN-TPH6406PT-F100	Focal Length: 100 mm

Dimensions (mm)

