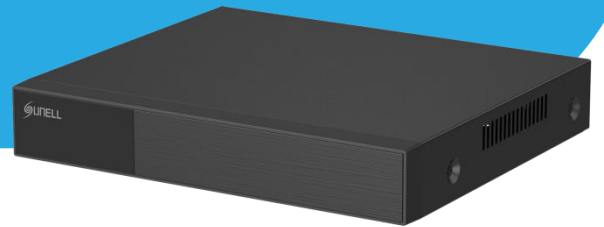




# SN-NVR5008E1

8CH 1HDD NVR



## Key Features

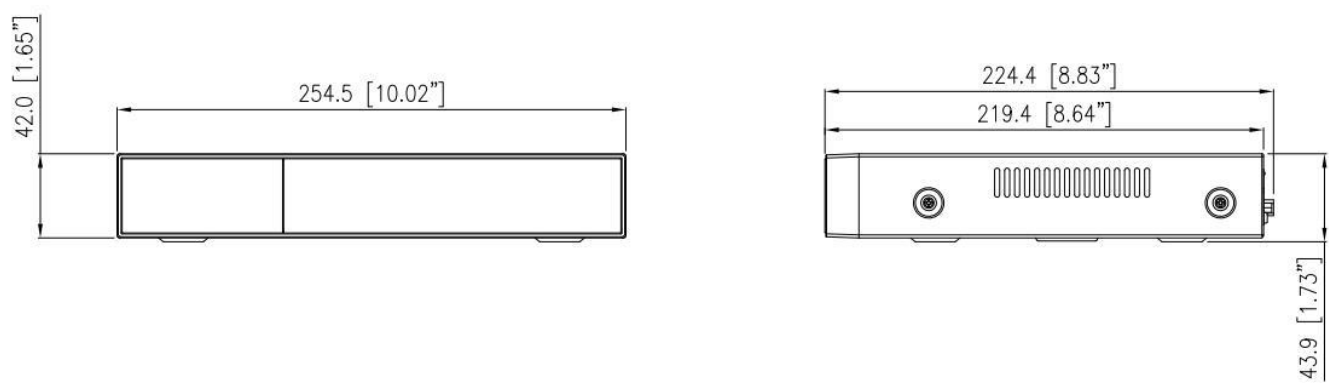
- Up to 8ch IP cameras access
- Up to 1-ch @ 6MP or 4-ch @ 1080P decoding capacity
- VGA/HDMI simultaneous video output
- 1 SATA hard disk up to 10TB
- 1 RJ45 10M/100M network interface
- Smart search & playback
- Support cloud upgrade

## Specification

Video Input	
IP Camera Input	8 Channel
Incoming Bandwidth	64 Mbps
Outgoing Bandwidth	64 Mbps
Video Output	
HDMI Output	1920 × 1080, 1280 × 1024, 1024 × 768
VGA Output	1920 × 1080, 1280 × 1024, 1024 × 768
Decoding Capacity	1ch 6MP, 4ch 1080P, 8ch D1@30fps
Dual Stream	Support
Multi-screen Display	1/4/8/9
Recoding	
Resolution	6MP, 5MP, 4MP, 3MP, 1080P, 720P, D1 etc.
Recording Mode	Manual, Schedule (Regular, Continuous), Event
Trigger Events	Motion Detection, Video Loss, IVS
Playback and Backup	
Sync Playback	8-ch
Search Mode	Time /Date, Alarm, Picture grid, Event
Backup Mode	USB Device, Network
Network	
Network Function	HTTP, HTTPS, TCP/IP, IPv4, IPv6, UPnP, UDP, RTSP, SMTP, NTP, DNS, DHCP, P2P, IP Filter, DDNS, 802.1X, SNMP, PPPoE
Remote Users	8 users
Smart Phone	iOS, Android
Interoperability	ONVIF, SDK
Storage	
HDD	1 SATA interface
Capacity	Up to 10TB for each HDD
Interface	
Network Interface	1 RJ-45 (10/100 Mbps) self-adaptive Ethernet port
USB	Rear panel: 2 × USB 2.0
HDMI	1

VGA	1
General	
Power Supply	DC12V/2A
Power Consumption	< 5 W (without HDD)
Operating Conditions	-10 °C to 50 °C (14 °F to 122 °F)
Storage Conditions	Less than 90% RH
Certifications	CE/FCC
Dimensions	254.5 × 224.4 × 43.9 mm (10.02 × 8.83 × 1.73 inch)
Net Weight	0.62 kg without HDD

Dimensions (mm)



Rear Panel

