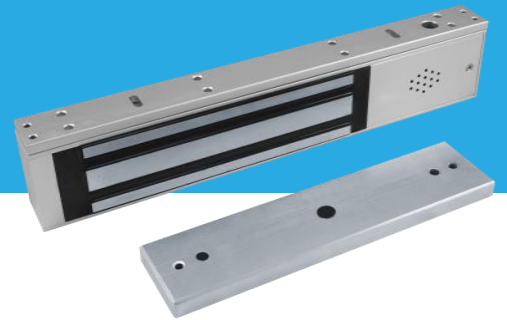




SN-GL3101

Magnetic Lock



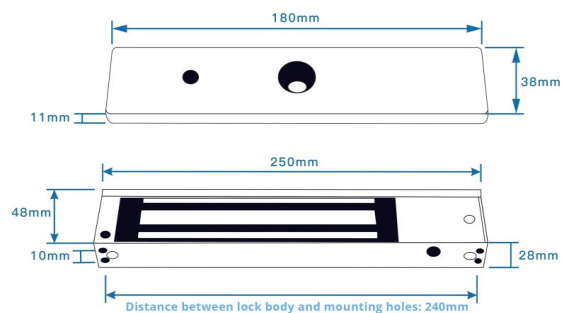
Key Features

- Magnetic lock supports direct pulling force of 280 kg (617 Lbs)
- Power supply can be 12VDC or 24VDC, (default voltage is 12VDC)
- 500 thousand times of locking operation
- Suitable for wooden door, glass door and fireproof door
- LED indicator displays door lock status
- Abrasion-proof materials

Specification

General	
Input Voltage	12 VDC/24 VDC +10%
Working Current	12 V/480 mA, 24 V/240 mA
Working Temperature	-10°C~+55°C (14°F~131°F)
Operating Humidity	0 to 90% (Relative Humidity)
LED Indicator	Red: Door is unlocked Green: Door is locked
Suitable Door	Wooden door, glass door and fireproof door
Lifetime	500 Thousand Times of Locking Operation
Shell	Hard anodizing electroplating operated
Lock body	Eco-friendly Zinc with electroplating operated
Armature plate	Eco-friendly Zinc with electroplating operated
Dimension of lock body (L × W × H)	250 × 48 × 28 mm (9.84 × 1.89 × 1.1")
Dimension of armature plate (L × W × H)	180 × 38 × 11 mm (7.09 × 1.5 × 0.43)"
Weight	2 Kg (4.41 Lbs)

Dimensions(mm)



Application

